

## LED Master



### Technische Daten

**Light distribution**

symmetric, segments partially switchable

**Control gear**

electronic

**Mains lead**

1,5 m H03VV-F 3G0,75 c/w Schuko-plug

**Lamp cover**

translucent durable plastic material

**Switch**

LED-controller and power supply integrated in the lighting head: mains switch ON/OFF and push buttons for dimming and scene selection - no irritating separate power adaptor

**Power**

12W

**LED-lifetime**

approx. 50.000 hrs.

**Protection class**

IP20

**Joint arm**

Easy adjustable, robust and low-vibration all-metal arm, integral springs in the middle and lower articulation joint

**Lens**

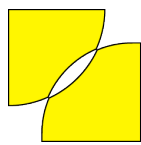
High quality, biconvex crown, 3-diopters (=175 % bigger than object)

**Weight**

approx. 3,5 kg

### Profile

- Durable: high impact ABS resin, matt black, reducing reflections into the lens
- Low overall height lets you get close to your work
- Incl. Frosted and removable lamp cover, flush with the head
- Easy adjustable, robust and low-vibration all-metal arm



- 3-D-articulation joint for individual positioning
- Three die-cast joints with tension control knobs. Middle and base joint with additional integral springs
- Sleek all-metal design without exposed springs
- No sagging, vibrations are damped – 6 movements
- Dimensions: optical glass lens Ø 150 mm (approx. 145 mm visible)
- Colour: Lighting head black, arm silver-gray RAL 9006

## Light properties & Lens

Illuminance at the working area:

Measuring distance	Lux
15cm	6000lx

- 48 high-quality LEDs in circline layout, very even and shadow-free light underneath the lens - light output sufficient even for difficult visual tasks
- Best colour rendition index: (**CRI > 90**) and best colour temperature **5000K**
- 4 LED-segments switchable in 3 different scenes for visualizing structures, cracks and faults through selective shadowing

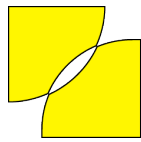


Scene (1)

Scene (2)

Scene (3)

- Scene (1): all segments ON: even and broad light pattern underneath the lens
- Scene (2): Left + right segment ON for setting off structures etc.
- Scene (3): Rear segment only for strong „hi-lighting“ effect
- **Continuous dimming** function from 100 to approx. 5% illuminance
- No IR- and UV-light emission – no heat dissipation in direction of the light
- High quality, biconvex crown optical glass lens Ø 150 mm (approx. 145 mm visible) with 3-diopters (=175% bigger than object)
- Nearly without optical distortion because of the minimal curvature of lens



## Mounting brackets

- Picture 1: screw-down flange 60x60mm **(incl.)**
- Picture 2: table clamps with a span of 0-44mm or 15-85mm
- Picture 3: wall angle
- Picture 4: table base 240x265mm, 10,5kg



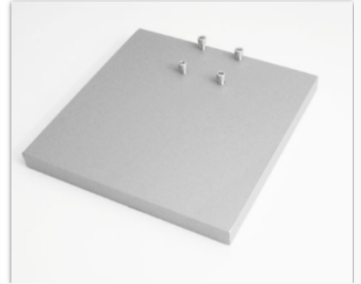
picture 1



picture 2



picture 3



picture 4